



— BUREAU OF —
RECLAMATION

Grand Coulee Security Response Force Upgrades Environmental Assessment

Scoping Report



**US Department of the Interior
Bureau of Reclamation
Columbia-Pacific Northwest Regional Office
1150 N. Curtis Road
Boise, ID 83706**

September 2022

Mission Statements

The Department of the Interior protects and manages the Nation's natural resources and cultural heritage; provides scientific and other information about those resources; and honors its trust responsibilities or special commitments to American Indians, Alaska Natives, and affiliated island communities.

The mission of the Bureau of Reclamation is to manage, develop, and protect water and related resources in an environmentally and economically sound manner in the interest of the American public.

Table of Contents

Page

| | |
|---|----------|
| PUBLIC SCOPING | 1 |
| Background | 1 |
| Purpose and Need for the Proposed Project | 1 |
| Overview of the Scoping Report | 1 |
| Description of the Scoping Process | 2 |
| Scoping..... | 2 |
| Virtual Public Meeting | 2 |
| Advertising and Outreach | 3 |
| Consultation | 3 |
| Method of Comment Collection and Analysis | 3 |
| Definitions | 4 |

Appendixes

Appendix A. Virtual Public Meeting Website
Appendix B. Public Outreach Materials

Acronyms and Abbreviations

Full Phrase

| | |
|-------------|--------------------------------------|
| EA | Environmental Assessment |
| GCSRF | Grand Coulee Security Response Force |
| NEPA | National Environmental Policy Act |
| NOI | Notice of Intent |
| Reclamation | Bureau of Reclamation |
| SRF | Security Response Force |
| VPM | virtual public meeting |

Public Scoping

Background

The Bureau of Reclamation (Reclamation) is preparing an environmental assessment (EA) for the Grand Coulee Security Response Force (GCSRF) Upgrades project.

Reclamation is proposing to upgrade existing security components at the Grand Coulee Power Office by relocating and installing new guard stations, creating improved inspection areas, establishing additional or improved security cameras and lighting, and replacing or installing security gates, fences, and intrusion detection systems at Grand Coulee Dam facilities. The Grand Coulee Power Office is also proposing construction of new buildings, installation of utilities, and access road improvements to facilitate Security Department administration, badge issuance and access control functions, and support Security Response Force (SRF) training.

On August 15, 2022, Reclamation issued a news release and other public outreach materials announcing the beginning of a 15-day public scoping period to solicit public comments and to identify issues. The comment period ended on August 29, 2022.

Purpose and Need for the Proposed Project

The purpose of the GCSRF Project is to: (1) update existing security components that have reached their expected service life or do not conform with current security requirements; (2) create an integrated hardened physical perimeter around security assets and facilities; (3) consolidate Security Department administrative and access control offices and functions outside of restricted areas; and (4) upgrade and enhance SRF training facilities and capacities.

The need for the proposed action is to comply with Department of the Interior ([444 Departmental Manual 1](#), [444 Departmental Manual 2](#)) and Bureau of Reclamation ([SLE 03-02](#)) security requirements, modernize physical security components, minimize security risk to employees and facilities, and improve Security Department administrative operations, and SRF capabilities.

Overview of the Scoping Report

Public involvement is a vital and legally required component of the National Environmental Policy Act (NEPA) process. It vests the public in the decision-making process and allows for full environmental disclosure. Guidance for implementing public involvement under NEPA is codified in 40 Code of Federal Regulations 1506.6.

Scoping is an open and early step in the NEPA process that helps Reclamation determine the scope of issues to be addressed and identify significant issues related to the proposed project. Information collected during scoping may also be used to develop the alternatives to be analyzed in a NEPA document. Scoping is not a required step for the preparation of an EA, though it may be useful to help identify public concerns or to gather more information around potential impacts to consider (43 Code of Federal Regulations 46.235 and 46.305[a]). In accordance with NEPA, Reclamation must document the results of public scoping. This scoping report summarizes the scoping process and the comments received during the formal scoping period.

Description of the Scoping Process

As required by NEPA and its public involvement guidance, Reclamation solicited comments from potential cooperating, participating, and other relevant agencies and the public, then organized and analyzed all comments received. Reclamation then evaluated the content of each comment and extracted the overarching issue or issues to address during the NEPA process. These issues define the scope of analysis for the GCSRF EA and are used to develop the project alternatives.

Scoping

From August 15 through August 29, 2022, Reclamation sought public comments to determine relevant issues that could influence the scope of the environmental analysis, including alternatives, and guide the process for developing the GCSRF EA.

Comment submissions received or postmarked by August 29, 2022, are included in this document. To the extent practicable, submissions received past this date will be considered during the development of the GCSRF EA, but submissions received after August 29, 2022, will not be summarized in this report.

Virtual Public Meeting

During the public scoping comment period, the public had an opportunity to participate in the scoping process and provide input through a web-based virtual public meeting (VPM) room that was available 24 hours a day, from August 15 to August 29, 2022. The VPM was structured around stations, which were modeled on the topics typically seen at open house public scoping meetings. Each VPM station was a single web page that the public could view and interact with. The welcome station provided a place for website visitors to sign in and add themselves to the project mailing list. The welcome station also contained a link that visitors could use to download all maps and documents in the VPM room. A commenting station allowed visitors to submit written comments directly through the VPM comment form and provided information on how to submit comments via mail or email. VPM stations are included in **Appendix A**, Virtual Public Meeting Website, and are also viewable at the archived GCSRF Public Scoping VPM webpage¹ at <https://www.virtualpublicmeeting.com/grand-coulee-srf-ea-scoping>.

¹ The comment submission and question and answer functions are disabled in the archived VPM.

Advertising and Outreach

Reclamation advertised the public scoping period through several different avenues. A postcard was mailed announcing the public scoping period to property owners within 0.25 miles of any project component. Reclamation also distributed public notices via a news release which was posted to Reclamation's website (<https://www.usbr.gov/newsroom/news-release/4293>), an email blast to interested stakeholders, and flyers that were placed in various public locations around the communities of Grand Coulee and Coulee Dam (see **Appendix B**, Public Outreach Materials). A news article was published in The Star in Grand Coulee on August 17, 2022, that discussed the project and the public scoping period (see **Appendix B**).

Additionally, Reclamation maintains a project website with information related to the development of the GCSRF EA: <https://www.usbr.gov/pn/program/ea/wash/gcsrf/index.html>. Reclamation's project website was included in the press release and includes background documents, frequently asked questions, contact information, and project updates.

Consultation

The Confederated Tribes of the Colville Reservation and the Washington State Department of Archaeology and Historic Preservation are identified as consulting parties².

Method of Comment Collection and Analysis

All comment submissions received on or before August 29, 2022, were evaluated and are considered in this scoping summary report.

To ensure that public comments are properly captured and that none were overlooked, Reclamation uses a multi-phase management and tracking system. Submissions are given a unique identifier and are logged into the comment response and analysis database. Each submission is then reviewed, and individual substantive comments are extracted.

Each comment is reviewed to determine if they are substantive and if any project issues are identified. Each comment is assigned to one of the two following categories:

- Substantive comments related specifically to the GCSRF EA
- Comments that are non-substantive or pertain to issues beyond the scope of the GCSRF Upgrades project

Comments similar to each other are grouped under a topic heading based on the content of the comment, referred to as issue categories. Reclamation then drafts a statement summarizing the issues contained in each group of comments. Reclamation uses these issue statements to inform analysis and alternatives development for the EA.

² Consulting parties are those tribal agencies and state historic preservation agencies participating in the project in compliance with Section 106 of the National Historic Preservation Act.

During the GCSRF EA public scoping period, Reclamation received one comment submission; no substantive comments were identified from this submission.

Definitions

The terms listed below are provided to help understand the method of comment collection and analysis.

Comment Submission

Input on the proposed project provided by a commenter. This may be in the form of a letter, email, phone call, or written comment submitted via the VPM. A comment submission may contain any number of comments (both substantive and non-substantive).

Comment

A distinct statement or question about a particular topic, such as:

- Purpose and need for action
- Alternatives to analyze in the EA
- Any aspect of potential environmental impacts arising from the Proposed Action and No Action alternatives
- Reclamation's implementation of the NEPA process
- Matters outside the scope of the EA

Substantive Comment

Substantive comments are those that: provide new information or suggest an alternative to the proposed project; identify a different way to meet the project need; suggest alternate methodologies for analysis and the reason(s) why they should be used; or make factual corrections or identify sources of credible research or data.

Commenter

This term includes any and all potentially interested or affected parties, whether private citizens, state, local or tribal governments, environmental groups, water users or irrigation districts, civic and community organizations, or businesses.

Issue Category

The resource topic or issue to which a comment is addressed. This may include the NEPA process including alternatives development, the affected environment or environmental consequences sections of the EA, or a specific resource such as water quality.

Issue Summary

A summary capturing the essence of similar substantive comments on a given comment category and the summary response to those comments.

Appendix A

Virtual Public Meeting Website

This page intentionally left blank.



Grand Coulee Security Response Force Upgrades Environmental Assessment Virtual Public Scoping Meeting Room



Aerial photograph of Grand Coulee Dam.

Thank you for visiting the virtual public scoping meeting room for the Grand Coulee Security Response Force Upgrades environmental assessment.

The Bureau of Reclamation has initiated preparation of an environmental assessment for the Grand Coulee Security Response Force Upgrades project. The proposed project will implement measures to upgrade various components at Grand Coulee Dam facilities, identified through comprehensive security assessments, to meet current security requirements.

Reclamation is preparing the GCSRF EA in accordance with the National Environmental Policy Act, and will be gathering information from other agencies, interested parties, and the public on potential alternatives to analyze and issues of concern. The public will have the opportunity to participate in the scoping process and [provide input](#) through this web-based, virtual public meeting room from **Aug. 15 to Aug. 29, 2022**. All scoping comments must be submitted/postmarked by **Aug. 29, 2022**.



Photograph of Grand Coulee Dam from Crown Point Vista.

PLEASE SIGN IN AND LET US KNOW YOU VISITED OUR SITE

Public Disclosure

Before including your address, phone number, email address, or other personal identifying information in your input, be advised that your entire entry, including your personal identifying information, may be made publicly available at any time. While you may request that we withhold your personal identifying information from public review, we cannot guarantee that we will be able to do so.

Name *

First Name

Last Name

Email *

Organization

Address

Address 1

Address 2

City

State/Province

Zip/Postal Code

Country

Submit

How to Use The Virtual Public Meeting Room

By clicking on the following links, participants can do the following:

- Move from station to station to read project information and meeting materials.
- [Provide comments](#) on affected resources, issues to be considered, and potential alternatives.
- Read [frequently asked questions and answers](#) and pose additional questions for Reclamation.

Virtual Public Meeting Room Stations

Station 1: NEPA and Public Involvement

Station 2: Overview of the GCSRF Upgrades Project

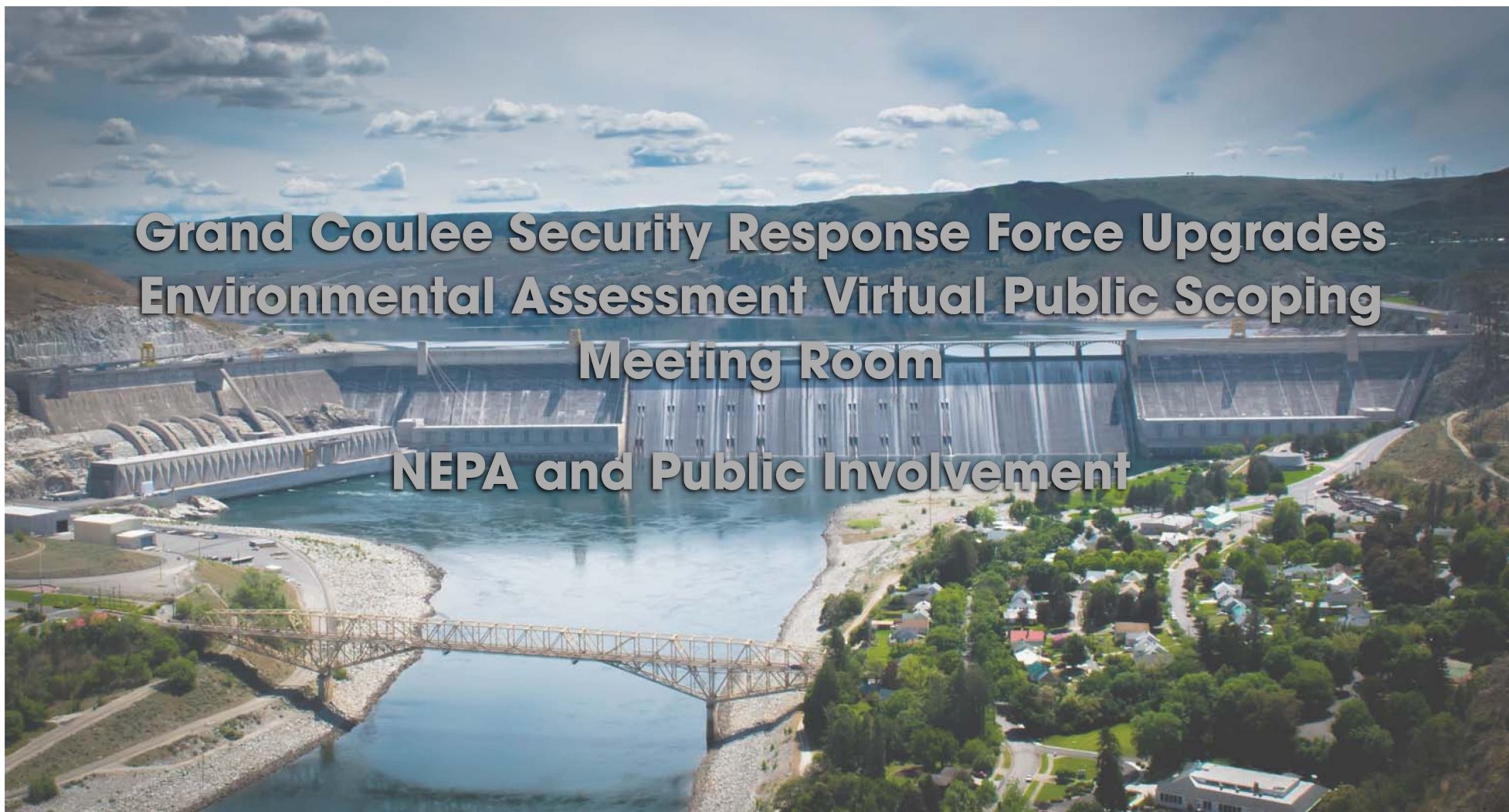
Station 3: Important Project Facts

Station 4: Providing Scoping Comments

All of the GCSRF EA meeting room files on this site are available as a [zip file download](#).

Station 5: Frequently Asked Questions

For more information on virtual public meetings, [email us](#), visit [EMPSi's website](#), or [our Virtual Public Meetings home page](#).



Aerial photograph of Grand Coulee Dam.

The National Environmental Policy Act Process and Scoping

NEPA requires that federal agencies engage the public during preparation of an environmental assessment. Scoping is the process that continues throughout the planning and early stages of EA preparation. Agencies use scoping to engage various stakeholders including federal, state, and local agencies, and Native American Tribes, and the public in the early identification of affected resources, issues to be considered, and potential alternatives.

While not required during preparation of an EA, the Bureau of Reclamation has chosen to engage the public in a 15-day scoping period from **Aug. 15 to Aug. 29, 2022**, as the draft EA is developed. Scoping is the initial opportunity for the public to provide input on the project. Reclamation will consider all comments received during the scoping period.

Engaging the Public

This meeting room will be accessible 24 hours a day during the public scoping period of **Aug. 15 to Aug. 29, 2022**. There also will be a public review and comment period associated with the release of the draft EA (anticipated January 2023).

NEPA Planning Process



Initial Planning
Define Proposed Action and Alternatives,
Conduct Scoping (if determined necessary)



```
graph TD; A[Finalize alternatives] --> B[Analyze effects of alternatives]; B --> C[Prepare draft EA]; C --> D[Release draft EA]; D --> E[Optional public review and comment period]; E --> F[Prepare final EA]; F --> G[Prepare Finding of No Significant Impact]; G --> H[Release final EA and FONSI];
```

Finalize alternatives

Analyze effects of alternatives

Prepare draft EA

Release draft EA

Optional public review and comment period

Prepare final EA

Prepare Finding of No Significant Impact

Release final EA and FONSI


```
graph TD; A[Publish Notice of Availability for final EA and FONSI] --> B[Implement decision]
```

Publish Notice of Availability for final EA and FONSI

Implement decision

Next Station: Overview of the GCSRF Upgrades Project

Return to Home Page

For more information on the GCSRF EA, please contact Jason Sutter at [208-378-5313](tel:208-378-5313), BOR-SHA-CPNGGCSRF@usbr.gov.

To be added or removed from the mailing list, please contact Francis Craig at francis.craig@empci.com.

For more information on virtual public meetings, [email us](#), visit [EMPSi's website](#), or [our Virtual Public Meetings home page](#).



Aerial photograph of Grand Coulee Dam.

Project Overview

Background

Grand Coulee Dam forms Lake Roosevelt, extending 151 miles upstream to the Canadian border. Construction of the dam was included in the [Depression Era Public Works Administration](#), a program which provided jobs to the unemployed by developing the nation's resources. The Bureau of Reclamation was placed in charge of the project and construction occurred from 1933 to 1941.

Grand Coulee Dam provides water to irrigate approximately 600,000 acres in the [Columbia Basin Project](#), Reclamation's largest multipurpose project.

Grand Coulee Dam is the largest hydropower producer in the United States supplying power to Washington, Oregon, Idaho, western Montana, and parts of California, Nevada, Utah, Wyoming, and Canada. The dam includes three major hydroelectric power generating plants and a pump-generating plant. In addition to its irrigation and power functions, Grand Coulee Dam is a primary factor in controlling the floods on the Columbia River, and provides for streamflow regulation for fish migration, navigation, and recreation.

The Grand Coulee Security Response Force protects assets and power generation equipment vital to providing water and electricity to the Western United States. SRF Officers conduct security operations at facilities across



Photograph of Grand Coulee Dam from Crown Point Vista.

engaging employees and visitors as they enter and exit the premises. In addition, Grand Coulee is the location of the SRF Training Center. All SRF Officers stationed at Grand Coulee, Glen Canyon, and Hoover dams are required to attend and pass the SRF Academy as part of the hiring process.

Purpose and Need

Recent comprehensive security assessments of Grand Coulee Dam facilities identified the need to upgrade various components to meet current security requirements.

The **need** for the proposed project is to:

- 1) update existing security components that have reached their expected service life or do not conform with current security requirements;
- 2) create an integrated, hardened, physical perimeter around security assets and facilities;
- 3) consolidate the security department administrative operations and access control offices; and
- 4) upgrade and enhance the SRF training facilities.

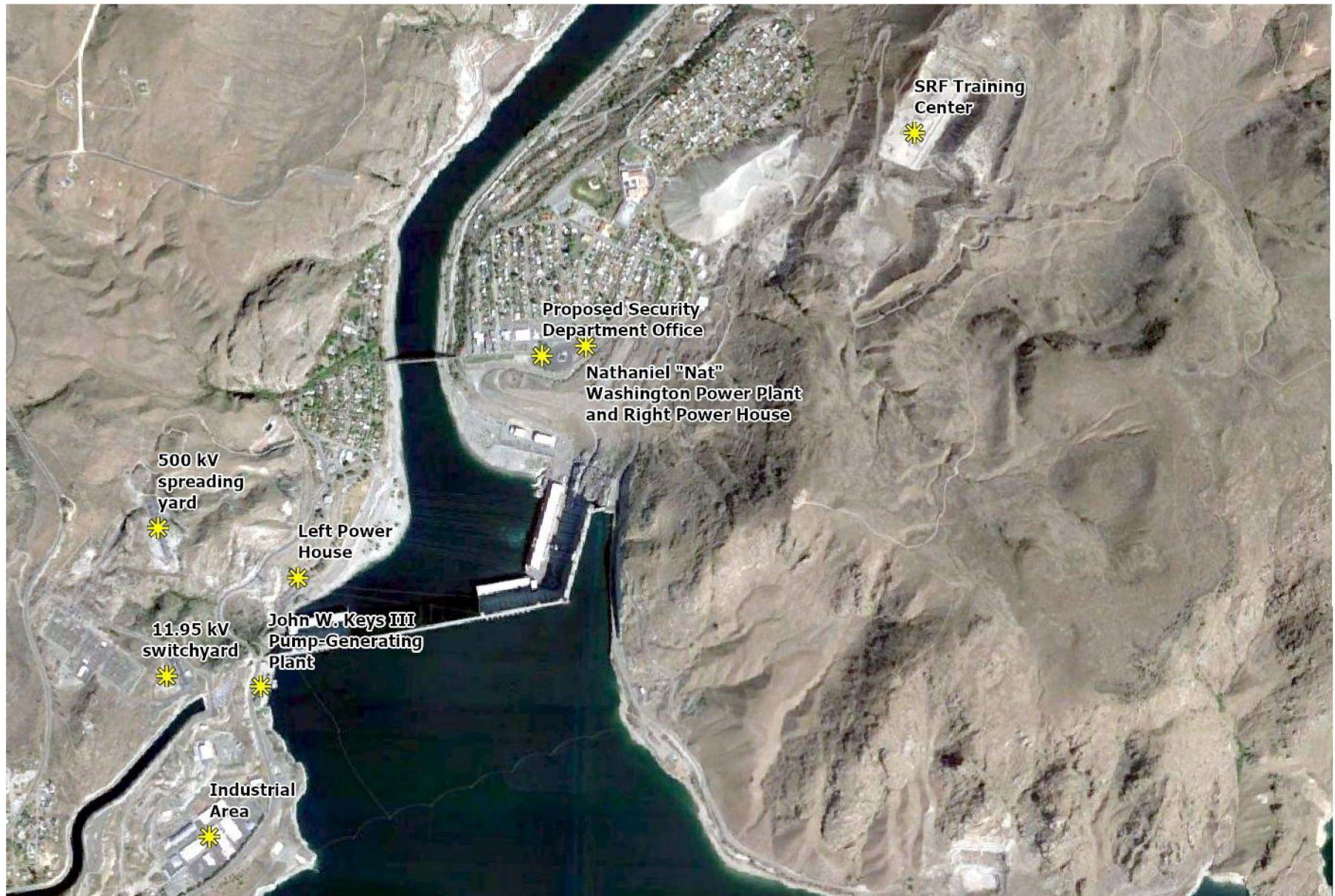
The proposed project is needed to comply with Department of the Interior ([444 DM 1](#), [444 DM 2](#)) and Reclamation ([SLE 03-02](#)) security requirements, modernize physical security components, minimize security risk



Grand Coulee Dam, SRF cadets and training facilities.

to employees and facilities, and improve security department administrative operations and SRF capabilities.

Aerial View of Project Units





Aerial view of project units.

Proposed Action

To meet the purpose and need, described above, Reclamation proposes to relocate and install new guard stations, create improved inspection areas, establish additional or improved security cameras and lighting, and replace or install security gates, fences, and intrusion detection systems at Grand Coulee Dam facilities. Reclamation also proposes construction of new buildings, installation of utilities, and access road improvements to facilitate the security department administration, badge issuance, and access control functions, and to support SRF training. More information is provided on the [Important Project Facts station](#).

[Next Station: Important Project Facts](#)

[Return to Home Page](#)

For more information on the GCSRF EA, please contact Jason Sutter at [208-378-5313](tel:208-378-5313), BOR-SHA-CPNGCSRF@usbr.gov.

To be added or removed from the mailing list, please contact Francis Craig at francis.craig@empsi.com.

[EMPSi's website](#), or [our Virtual Public Meetings home page](#).



Aerial photograph of Grand Coulee Dam.

Important Project Facts

Proposed Action

The Grand Coulee Security Response Force Upgrades project proposed action includes the following four key components:



Update security components

- Relocate and install new guard stations
- Create improved inspection areas
- Establish new security cameras and lighting



Create integrated hardened perimeter

- Replace or install security gates
- Replace or install fences
- Replace or install intrusion detection systems



**Consolidate security
department administration and
operations**

- Construct office building and install utilities to facilitate:
 - Administration and operations
 - Badge issuance
 - Facility access control



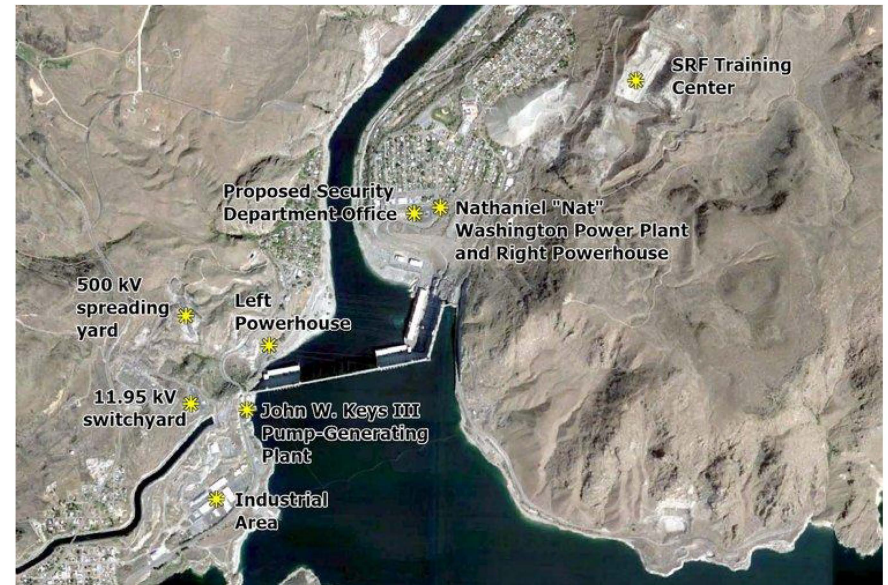
**Upgrade Security Response Force
Training Center facilities**

- Construct multi-functional training building to provide for:
 - Offices
 - Classrooms
 - Locker rooms
 - Dynamic training areas

Proposed Action - Project Area Units

The GCSRF Upgrades project will occur at eight relatively separate project areas or units. The eight units include:

- 11.95 kV station service switchyard
- 500 kV spreading yard
- Industrial Area
- John W. Keys III Pump-Generating Plant
- Left Powerhouse
- Proposed security department office location at Roosevelt/Marina Way
- Roosevelt/Marina Way guard station for the Nathaniel "Nat" Washington Power Plant and Right Powerhouse
- SRF Training Center



Aerial imagery of the GCSRF Upgrades project area units.

11.95 kV station service switchyard

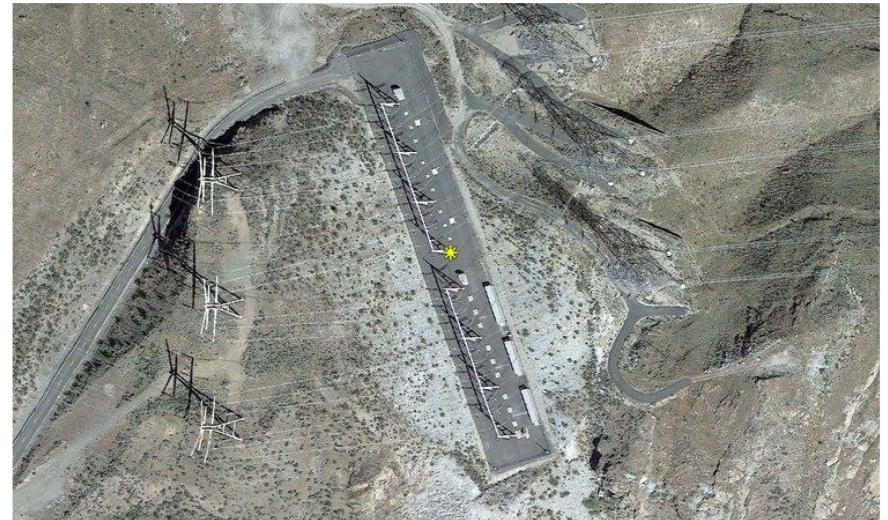


500 kV spreading yard

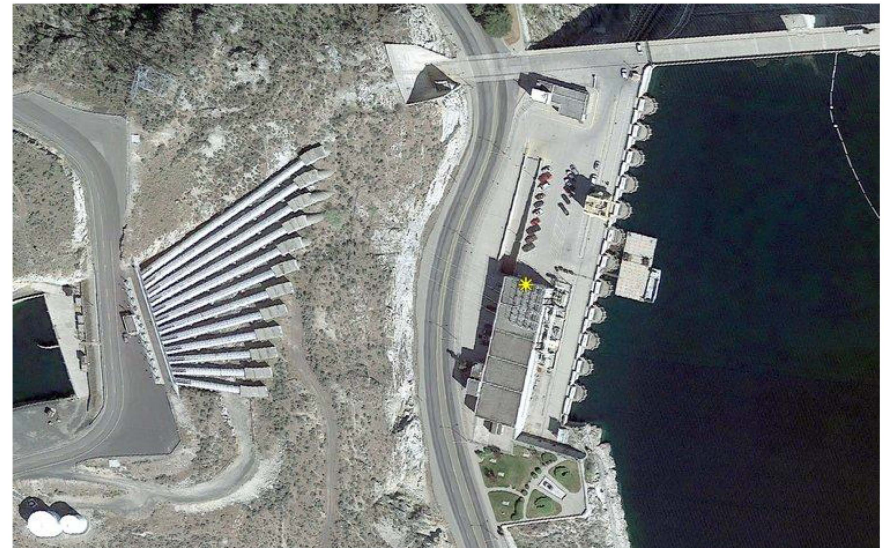




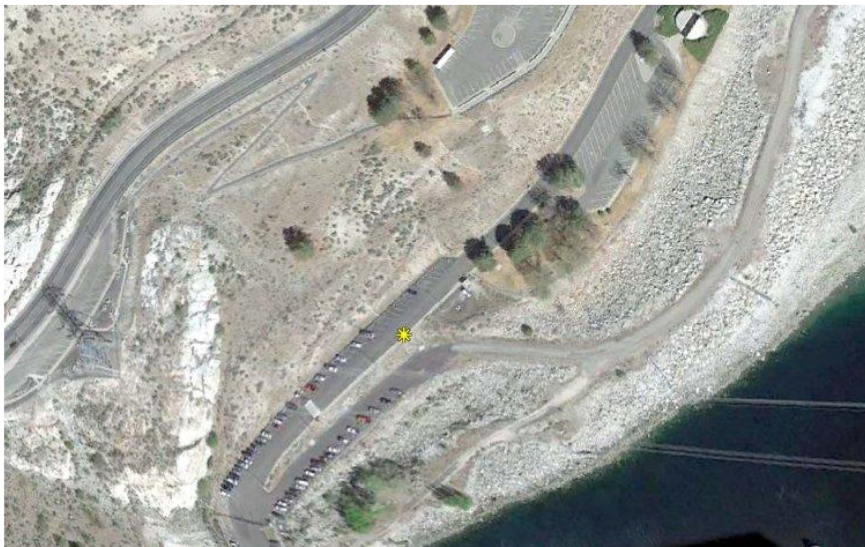
Industrial Area



John W. Keys III Pump-Generating Plant



Left Powerhouse

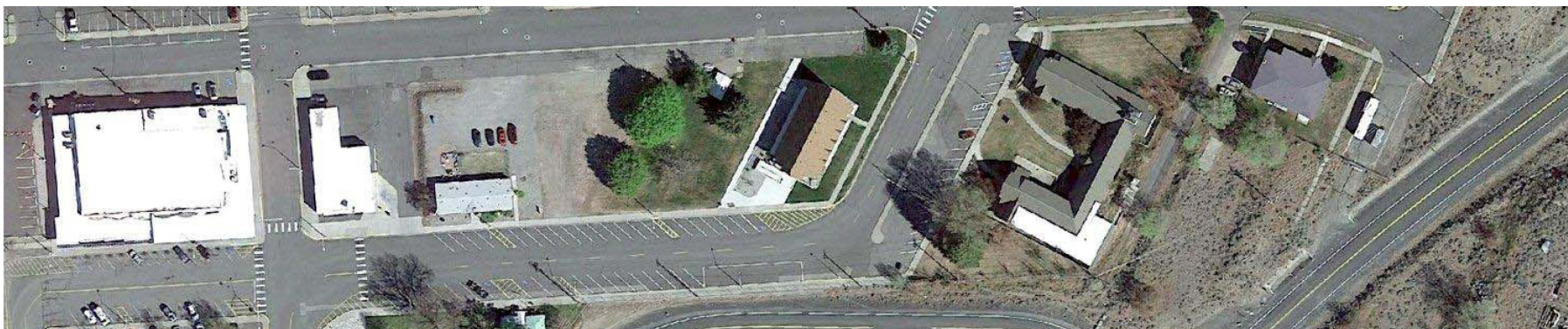


Security Response Force Training Center



Proposed security department office location at Roosevelt/Marina Way

Nathaniel "Nat" Washington Power Plant and Right Powerhouse





Visit the Bureau of Reclamation's [Grand Coulee Dam](#) website for more information on the Grand Coulee Dam and its history.

Next Station: [Providing Scoping Comments](#)

[Return to Home Page](#)

For more information on the GCSRF EA, please contact Jason Sutter at [208-378-5313](tel:208-378-5313), BOR-SHA-CPNGCSRF@usbr.gov.

To be added or removed from the mailing list, please contact Francis Craig at francis.craig@empsi.com.

For more information on virtual public meetings, [email us](#), visit [EMPSi's website](#), or [our Virtual Public Meetings home page](#).



Aerial photograph of Grand Coulee Dam.

The Bureau of Reclamation Wants Your Feedback

Reclamation is requesting your input on the Grand Coulee Security Response Force Upgrades project.

To be most helpful, comments needed to be as specific as possible. Examples of substantive comments are as follows:

- provide new information about the proposed project
- identify a different way to meet the project need
- suggest methodologies for analysis and the reason(s) why they should be used
- make factual corrections, or identify sources of credible research or data

Comments that are less helpful and considered non-substantive are those that

- vote in favor of or against the proposed action
- agree or disagree with agency policy without justification or supporting data
- don't pertain to the project area or the proposed project
- contain vague, open-ended questions

Ways to Comment

Reclamation set up several methods for you to submit your scoping comments on the GCSRF Upgrades environmental assessment. **All comments must be submitted/postmarked by Aug. 29, 2022.** We thank you in advance for your participation.

- Written comments can be sent to Jason Sutter, natural resource specialist, Bureau of Reclamation, Columbia—Pacific Northwest Region, 1150 N. Curtis Road, Boise, ID 83706. Email comments to BOR-SHA-CPNGCSRF@usbr.gov. Please indicate “GCSRF EA Scoping Comments” in the email subject line.

- Submit your comments by completing the online form below.

Information is also available on Reclamation's [Grand Coulee Security Response Force Upgrades project](#) page.

Public Scoping Comment Form - Submit Your Comment

Name *

First Name

Last Name

Email *

Organization *

Address

Address 1

Address 2

City

State/Province

Zip/Postal Code

Country

Public Scoping Comment for the GCSRF EA *

☐ I would like to be added to the project mailing list.

Submit

Still have questions? Visit our next station: [**Frequently Asked Questions page.**](#)

For more information on the GCSRF EA, please contact Jason Sutter at [208-378-5313](tel:208-378-5313), BOR-SHA-CPNGCSRF@usbr.gov.

To be added or removed from the mailing list, please contact Francis Craig at francis.craig@empsi.com.

For more information on virtual public meetings, [email us](#), visit [EMPSi's website](#), or [our Virtual Public Meetings home page](#).



Aerial photograph of Grand Coulee Dam.

Frequently Asked Questions

1. [What is the proposed federal action?](#)

2. [Why is the proposed federal action necessary?](#)
3. [What are the benefits of the proposed federal action?](#)
4. [How will Reclamation engage the public during the scoping period?](#)
5. [How will Reclamation engage Native American Tribes?](#)
6. [Are there cooperating agencies?](#)
7. [Will the proposed project affect access to the Grand Coulee Dam Visitor Center or any other facilities or roads open to the public?](#)
8. [How will the proposed federal action affect Grand Coulee Dam historical properties?](#)

1. What is the proposed federal action?

The proposed federal action is to upgrade existing security components at the Grand Coulee Power Office by relocating and installing new guard stations, creating improved inspection areas, establishing additional or improved security cameras and lighting, and replacing or installing security gates, fences, and intrusion detection systems at Grand Coulee Dam facilities. The GCPO also proposes construction of new buildings, installation of utilities, and access road improvements to facilitate security department administration, badge issuance and access control functions, and support Security Response Force training.

2. Why is the proposed federal action necessary?

Recent comprehensive security assessments of the GCPO identified various physical security insufficiencies at Grand Coulee Dam facilities. The reviews found that Grand Coulee Dam security infrastructure no longer meets current applicable requirements and needs to be upgraded.

The need for the proposed action is to comply with Department of the Interior ([444 DM 1](#), [444 DM 2](#)) and Bureau of Reclamation ([SLE 03-02](#)) security requirements, modernize physical security components, minimize security risk to employees and facilities, and improve security department administrative operations and Security Response Force capabilities.

3. What are the benefits of the proposed federal action?

The Grand Coulee Security Response Force Upgrades project would update existing security components that have reached their expected service life or do not conform with current security requirements, create an integrated hardened physical perimeter around security assets and facilities, consolidate security department administrative and access control offices and functions outside of restricted areas, and upgrade and enhance SRF training facilities and capacities.

4. How will Reclamation engage the public during the scoping period?

Reclamation is committed to an open and inclusive National Environmental Policy Act process. All comments will be carefully considered in our review and decision(s) on meeting the agency's NEPA

responsibilities and other applicable laws in this process. The public participates in the NEPA process by helping to identify environmental assessment issues and potential alternatives to the proposed action.

The 15-day public scoping period began on Aug. 15, 2022, and will continue through Aug. 29, 2022.

Reclamation will share information through this web-based virtual environment.

5. How will Reclamation engage Native American Tribes?

Reclamation will offer the opportunity for Government-to-Government consultation with the [Confederated Tribes of the Colville Reservation](#). Tribal representatives will be invited to actively participate in project coordination and offer expertise and Tribal perspective. The Tribes have deep vested interests in the activities at Grand Coulee Dam, especially activities occurring within the boundaries of the reservation. The Tribes will be invited to participate in the process as a cooperating agency.

6. Are there cooperating agencies?

Reclamation is the lead federal agency under NEPA for development of the environmental assessment. Reclamation will invite federal, state, and local agencies and Native American Tribes that have jurisdiction by law or special expertise with respect to environmental quality issues to participate as cooperating agencies. A cooperating agency is any federal, state, or local government agency or Native American Tribe that enters into a formal agreement—a memorandum of understanding—with the lead federal agency to help in the environmental analysis.

7. Will the proposed project affect access to the Grand Coulee Dam Visitor Center or any other facilities or roads open to the public?

Washington State Highway 155 is the primary way to access the [Grand Coulee Dam Visitor Center](#) and the town of Coulee Dam. Construction at key locations on WA-155 could temporarily disrupt traffic patterns for residents and visitors, but the highway will remain open. Although access to a small portion of the park and use of a few parking spaces will be unavailable, access to the visitor center and the remainder of the park will be accessible for normal visitor use. Reclamation will coordinate with Grant and Okanogan counties and the towns of Grand Coulee and Coulee Dam to minimize potential disruptions during project construction.

8. How will the proposed federal action affect Grand Coulee Dam historical properties?

The GCSRF EA will analyze the potential impacts that the proposed federal action will have on the human and natural environment, including historical properties. [Section 106 of the National Historic Preservation Act](#) mandates that federal agencies take preservation values into consideration when a proposed

federal action may affect historic properties. Reclamation plans on initiating the Section 106 review process and conducting consultation with the state historic preservation officer of the [Washington State Department of Archaeology and Historic Preservation](#) and the tribal historic preservation officer of the [Confederated Tribes of the Colville Reservation](#).

Through the Section 106 process, the GCPO archaeologist and historian, assisted by specialized contractors, will assess potential effects that the proposed federal action might have on the historic character of Grand Coulee Dam and other cultural or archaeological sites that might still exist in areas not impacted by the dam's construction. Reclamation will address any adverse effects with treatments that avoid, minimize, or mitigate impacts or actions that retain information that might be lost due to the project as necessary.

**If you have more detailed questions about the GCSRF
EA, please submit them below.**

Name *

First Name

Last Name

Email *

Question for Reclamation *

Submit

For more information on the GCSRF EA, please contact Jason Sutter at [208-378-5313](tel:208-378-5313), BOR-SHA-CPNGCSRF@usbr.gov.

To be added or removed from the mailing list, please contact Francis Craig at francis.craig@empci.com.

For more information on virtual public meetings, [email us](#), visit [EMPSi's website](#), or [our Virtual Public Meetings home page](#).

Appendix B

Public Outreach Materials

This page intentionally left blank.

Postcard



— BUREAU OF —
RECLAMATION

Grand Coulee Security Response Force Upgrades Environmental Assessment

Public Scoping Period

The Bureau of Reclamation invites the public to identify issues or alternatives to be considered in the Grand Coulee Security Response Force Upgrades environmental assessment. A 15-day public comment period will be open from **Aug. 15, 2022**, to **Aug. 29, 2022**.

During this period, the public can provide input through a web-based, virtual public meeting room. Visitors can view project information, pose questions, view answers, and submit comments.

The meeting room is accessible at

<https://www.virtualpublicmeeting.com/grand-coulee-srf-ea-scoping>.

Comments must be submitted electronically by **Aug. 29, 2022**, through the meeting room or by email at BOR-SHA-CPNGCSRF@usbr.gov.

Written comments must be postmarked by **Aug. 29, 2022**, and addressed to Jason Sutter, natural resource specialist, Bureau of Reclamation, Columbia–Pacific Northwest Region, 1150 N. Curtis Road, Boise, ID 83706.

For more information visit

<https://www.usbr.gov/pn/program/ea/wash/gcsrf/index.html>.

The Bureau of Reclamation is a federal agency under the U.S. Department of the Interior and is the nation's largest wholesale water supplier and second largest producer of hydroelectric power. Its facilities also provide substantial flood control, recreation opportunities, and environmental benefits. Visit our website at www.usbr.gov and follow us on Twitter @USBR.

News Release



MENU

News & Multimedia

News, Speeches, Fact Sheets and Multimedia from the Bureau of Reclamation

NEWS & MULTIMEDIA

News & Multimedia

News Releases

Filter By year

Filter By region

Filter By state

Filter By topic

Archived News Releases

News Stories

Speeches

Congressional Testimony

Fact Sheet

Leadership Bios

Organization Chart

Media Contacts

Photos

Multimedia

Social Media

Return to top

Reclamation > News & Multimedia > news release > Reclamation seeks comments on Grand Coulee Security Response Force Upgrades project

Reclamation seeks comments on Grand Coulee Security Response Force Upgrades project

Media Contact: Erika Lopez 208-378-5101 ealopez@usbr.gov

For Release: Aug 15, 2022

GRAND COULEE, Wash. – The Bureau of Reclamation invites the public to identify issues or alternatives for consideration in the development of an environmental assessment for the Grand Coulee Security Response Force Upgrades project. The 15-day public comment period is open from Aug. 15, 2022, to Aug. 29, 2022. The project area is located on the Columbia River about 90 miles northwest of Spokane.

Comprehensive security assessments of Grand Coulee Dam facilities identified the need to upgrade various components to meet current security requirements.

The proposed action is needed to comply with Department of the Interior and Bureau of Reclamation security requirements, modernize physical security components, minimize security risk to employees and facilities, and improve security department administrative operations and Security Response Force capabilities.

The purpose of the proposed project is to (1) update existing security components that have reached their expected service life or do not conform with current security requirements; (2) create an integrated, hardened, physical perimeter around security assets and facilities; (3) consolidate security department administrative operations and access control offices; and (4) upgrade and enhance the SRF training facilities.

Reclamation proposes to relocate and install new guard stations, create improved inspection areas, establish additional or improved security cameras and lighting, and replace or install security gates, fences, and intrusion detection systems. Reclamation also proposes construction of new buildings, installation of utilities, and access road improvements.

The public can provide input through a web-based, virtual public meeting room website at www.virtualpublicmeeting.com/grand-coulee-srf-ea-scoping. Virtual meeting visitors can view public meeting materials, pose questions, view answers, and submit comments. The site will be accessible 24 hours a day.

[Return to top](#)

Scoping comments can be submitted to BOR-SHA-CPNGCSRF@usbr.gov. Written comments can be sent to Jason Sutter, natural resource specialist, Bureau of Reclamation, Columbia–Pacific Northwest Region, 1150 N. Curtis Road, Boise, ID 83706. Comments must be submitted/postmarked by Aug. 29.

For more additional information, please visit
<https://www.usbr.gov/pn/program/ea/wash/gcsrf/index.html>.

Grand Coulee Security Response Force Upgrades Project
Grand Coulee Security Response Force Upgrades Environmental Assessment Virtual Public
Scoping Meeting Room

STAY IN TOUCH

[Contact Us](#) | [Site Index](#)

[Accessibility](#) | [Disclaimer](#) | [DOI](#) | [FOIA](#) | [No Fear Act](#) | [Notices](#) | [Privacy Policy](#) |
[Quality of Information](#) | [USA.gov](#) | [Vulnerability Disclosure Policy](#)



[Return to top](#)

Email Blast

The Bureau of Reclamation invites you to visit the virtual public meeting room website to learn about the **Grand Coulee Security Response Force Upgrades environmental assessment**.



— BUREAU OF —
RECLAMATION

Please forward this email to anyone you think may be interested.

When: Aug. 15-29, 2022

Where: Web-based virtual public meeting room is accessible at <https://www.virtualpublicmeeting.com/grand-coulee-srf-ea-scoping>.

The public is invited to identify issues or alternatives to be considered in the Grand Coulee Security Response Force Upgrades environmental assessment. A 15-day public comment period will be open from **Aug. 15** to **Aug. 29, 2022**.

During this period, the public can provide input through the web-based, virtual public meeting room. Visitors can view project information, pose questions, view answers, and submit comments.

Comments must be submitted by **Aug. 29, 2022**, through the meeting room or by email at BOR-SHA-CPNGCSRF@usbr.gov.

Written comments must be postmarked by **Aug. 29, 2022**, and addressed to Jason Sutter, natural resource specialist, Bureau of Reclamation, Columbia–Pacific Northwest Region, 1150 N. Curtis Road, Boise, ID 83706.

For more information visit <https://www.usbr.gov/pn/program/ea/wash/gcsrf/index.html>.

Flyer



Grand Coulee Security Response Force Upgrades Environmental Assessment

Public Scoping Period

The Bureau of Reclamation invites the public to identify issues or alternatives to be considered in the Grand Coulee Security Response Force Upgrades environmental assessment. A 15-day public comment period will be open from **Aug. 15 to Aug. 29, 2022**.



The meeting room is accessible at <https://www.virtualpublicmeeting.com/grand-coulee-srf-ea-scoping>. Scan this QR code using a smartphone device to bring you to the website.



Comments must be submitted by **Aug. 29, 2022**, through the meeting room or by email at BOR-SHA-CPNGCSRF@usbr.gov. If submitting an email, please indicate “GCSRF Scoping Comments” in the email subject line.



Written comments must be postmarked by **Aug. 29, 2022**, and addressed to Jason Sutter, natural resource specialist, Bureau of Reclamation, Columbia–Pacific Northwest Region, 1150 N. Curtis Road, Boise, ID 83706.

For more information visit <https://www.usbr.gov/pn/program/ea/wash/gcsrf/index.html>.

News Article

Dam security force looking at upgrades, seeks comments from public

[Share](#) [Tweet](#) [Pin](#) [0 Comments](#)

Last updated 8/17/2022 at 4:21am | [View PDF](#)

By Jacob Wagner



[Aerial view of Grand Coulee Dam.](#)

The U.S. Bureau of Reclamation is open to receiving any questions, comments, or concerns regarding security upgrades they are planning on making at the Grand Coulee Dam and related facilities.

The bureau has identified eight areas where it says security upgrades are needed, from new or upgraded gates and fences to a new security department office.

The bureau "invites the public to identify issues or alternatives for consideration in the development of an environmental assessment for the Grand Coulee Security Response Force Upgrades project," an Aug. 15 press release from the USBR states, noting that the public comment period is open from Aug.15-29.

"Comprehensive security assessments of Grand Coulee Dam facilities identified the need to upgrade various components to meet current security requirements," the press release states. "The proposed action is needed to comply with Department of the Interior and Bureau of Reclamation security requirements, modernize physical security components, minimize security risk to employees and facilities, and improve security department administrative operations and Security Response Force capabilities.

"The purpose of the proposed project is to (1) update existing security components that have reached their expected service life or do not conform with current security requirements; (2) create an integrated, hardened, physical perimeter around security

assets and facilities; (3) consolidate security department administrative operations and access control offices; and (4) upgrade and enhance the SRF training facilities.

"Reclamation proposes to relocate and install new guard stations, create improved inspection areas, establish additional or improved security cameras and lighting, and replace or install security gates, fences, and intrusion detection systems. Reclamation also proposes construction of new buildings, installation of utilities, and access road improvements."

There is currently no cost estimate for the project, but it includes a new security department office at Roosevelt Way and Marina Way and a new building for the Security Response Force Training Center, Public Affairs Specialist Erika Lopez told The Star in a Tuesday email. "Both buildings would be located on Reclamation land and require connection to existing utilities including water, sewer, and IT network. The training center includes offices, classrooms, restrooms, conference and locker rooms, and an area to accommodate the ability to reconfigure walls for training."

Lopez said access road improvements would include the paving or repaving of a gravel road to the training center. The current training center is on the hillside east of the city of Coulee Dam in the old "Brett Pit," once mined for sand and gravel during construction of the dam.

USBR Natural Resource Specialist Jason Sutter told The Star that the proposed projects are currently in the "scoping" period, and that around January of 2023, a larger Environmental Assessment will be available for the public to view.

He acknowledged that due to the overall project being related to security, not all details would be available to the public. He said the agency would release all details they are able to.

The proposed projects won't restrict access to Marina Way or any other bureau-owned roads that the public can currently access, he said.

The construction on the projects could begin in 2024, he explained, and continue over several more years as funding becomes available for various work to be done.

Sutter said that the USBR is working with local tribes, park services, and other government entities through the process.

The public can "provide input through a web-based, virtual public meeting room website" 24 hours a day at <http://www.virtualpublicmeeting.com/grand-coulee-srf-ea-scoping> where "virtual meeting visitors can view public meeting materials, pose questions, view answers, and submit comments," the release states.

Comments can also be submitted through email to BOR-SHA-CPNGCSRF@usbr.gov while written comments can be sent, postmarked by Aug. 29, to Jason Sutter, natural resource specialist, Bureau of Reclamation, Columbia-Pacific Northwest Region, 1150 N. Curtis Road, Boise, ID 83706.

The Star is working on finding more information regarding details of the project, and would also like to know any comments or questions readers might like addressed in future articles. Those comments and questions can be emailed to star@grandcoulee.com.